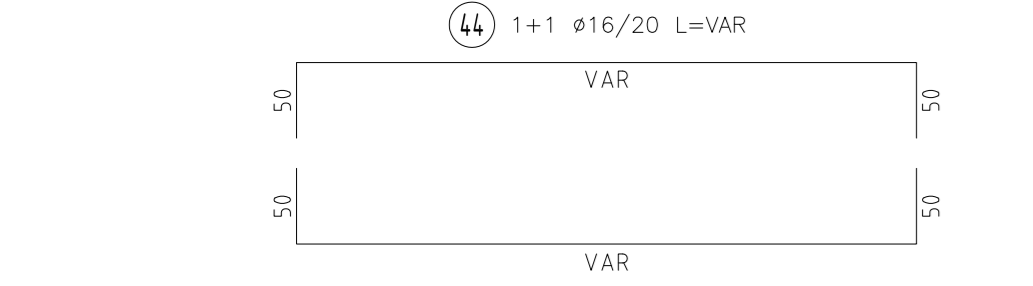
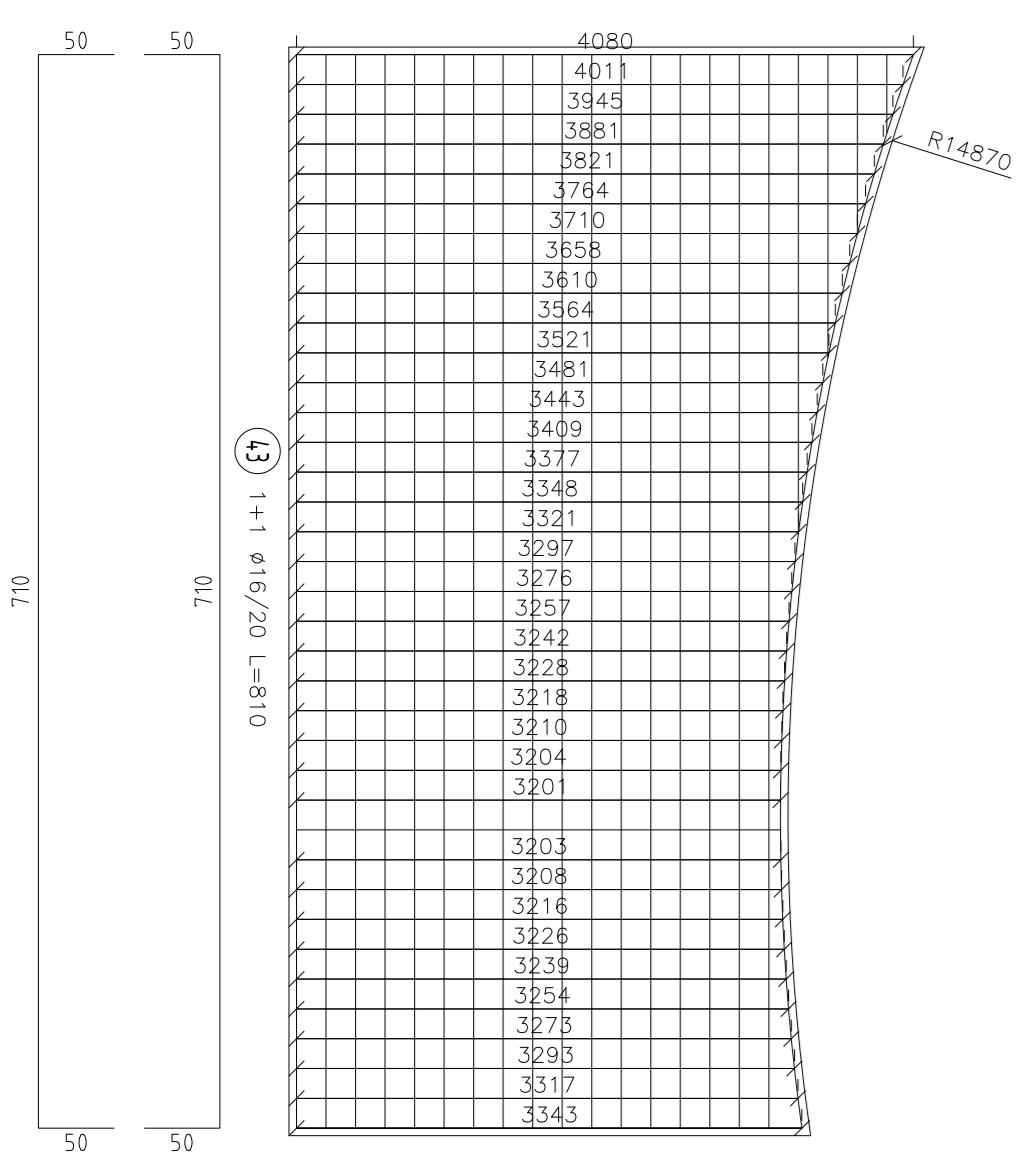
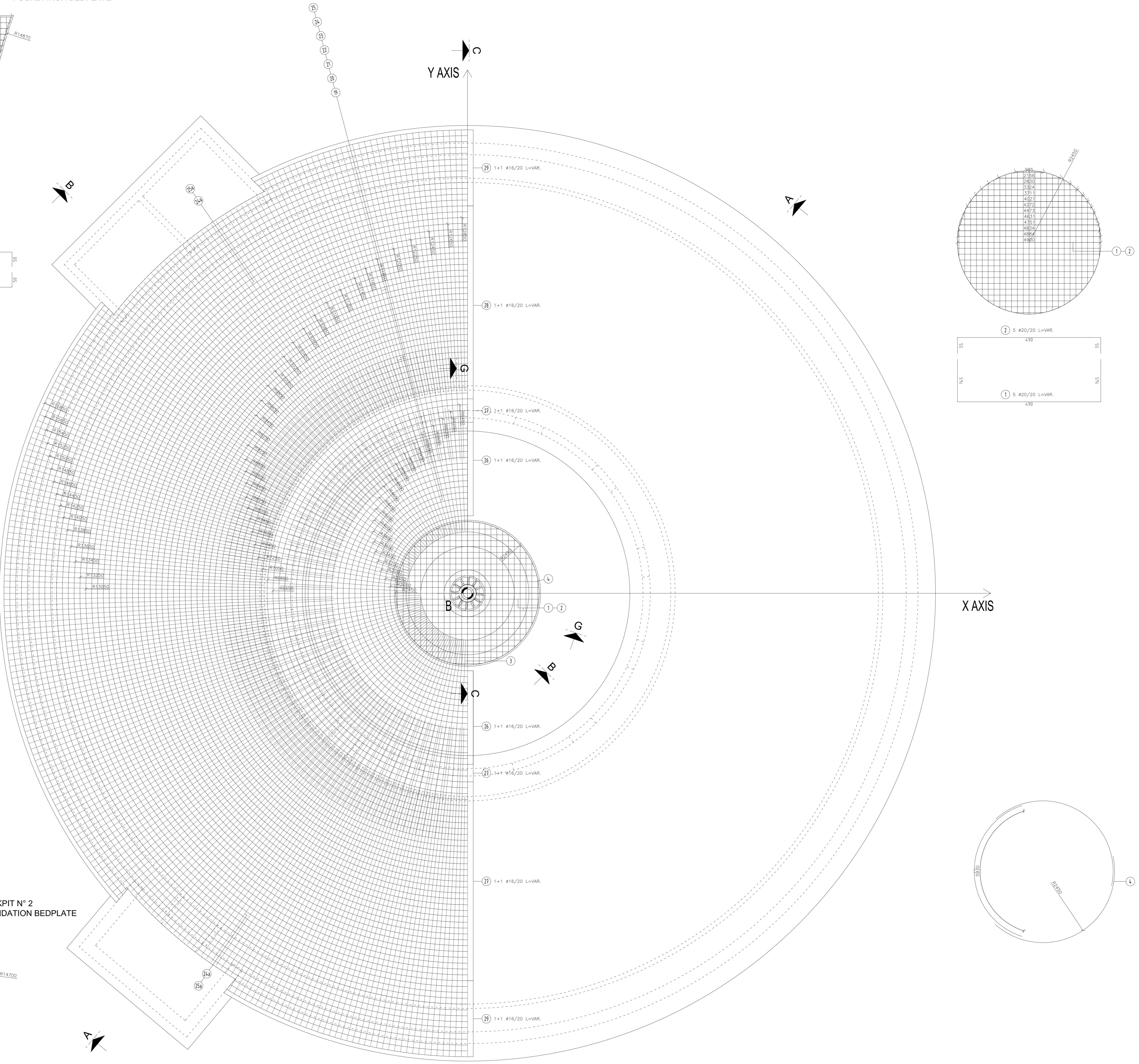
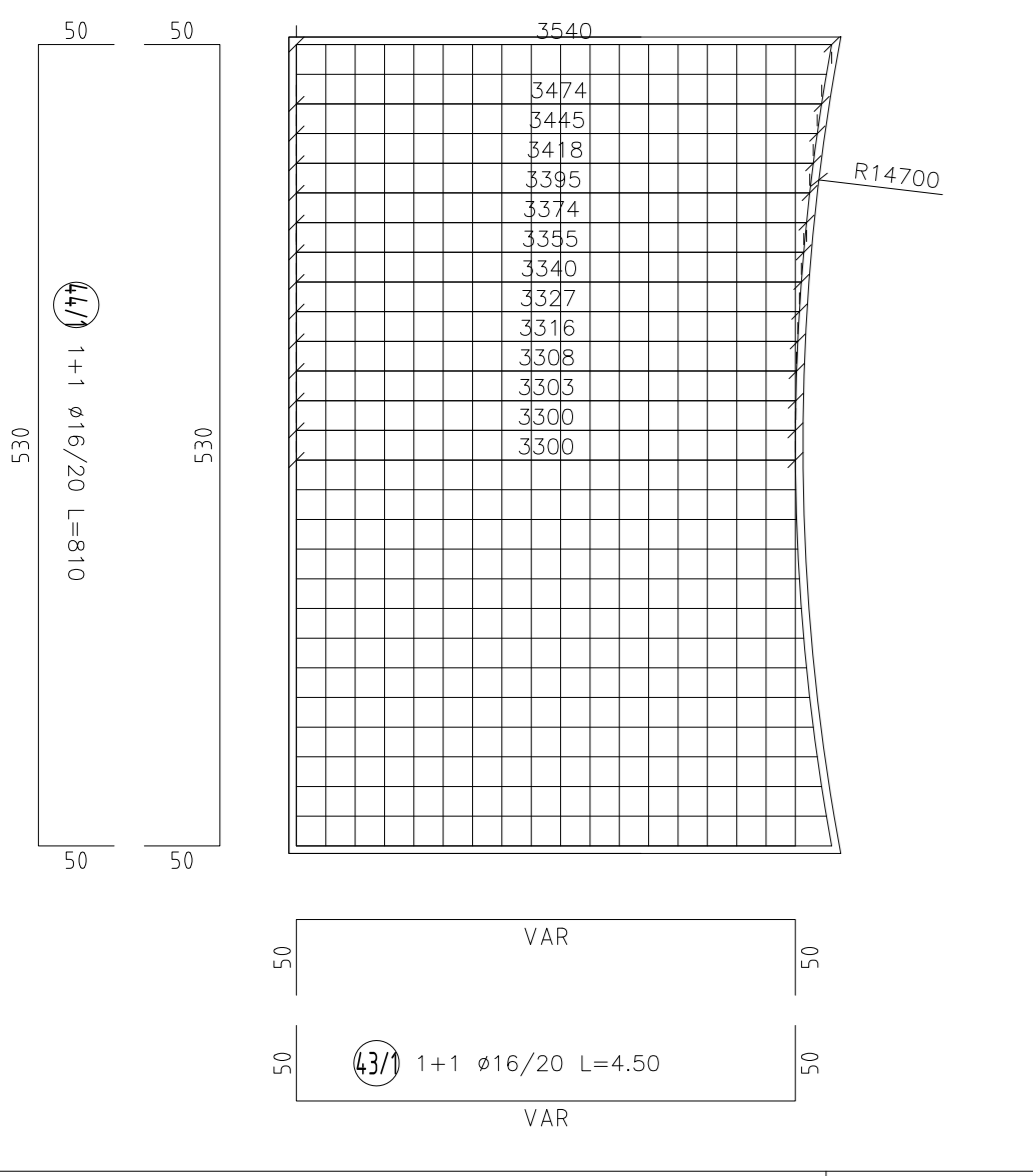


COCKPIT N° 1
FOUNDATION BEDPLATE



COCKPIT N° 2
FOUNDATION BEDPLATE



PLAN

MARK 1				MARK 2			
MARK	SIZE Ø	QUANTITY	LENGHT	MARK	SIZE Ø	QUANTITY	LENGHT
1.a	20	4	389	2.a	20	4	209
1.b	20	4	505	2.b	20	4	325
1.c	20	4	573	2.c	20	4	393
1.d	20	4	622	2.d	20	4	442
1.e	20	4	661	2.e	20	4	481
1.f	20	4	692	2.f	20	4	512
1.g	20	4	717	2.g	20	4	537
1.h	20	4	737	2.h	20	4	557
1.i	20	4	753	2.i	20	4	573
1.j	20	4	765	2.j	20	4	585
1.m	20	4	773	2.m	20	4	593
1.n	20	4	778	2.n	20	4	598
1.o	20	2	780	2.o	20	2	600

MARK	SIZE Ø	RADIUS	LENGHT
26.a	16	265	1+1 (1665+300)=1965
26.b	16	285	1+1 (1790+300)=2090
26.c	16	305	1+1 (1915+300)=2215
26.d	16	325	1+1 (2042+300)=2342
26.e	16	345	1+1 (2168+400)=2568
26.f	16	365	1+1 (2293+400)=2693
26.g	16	385	1+1 (2420+400)=2820
26.h	16	405	1+1 (2545+400)=2945
26.i	16	425	1+1 (2670+400)=3070
26.j	16	445	1+1 (2795+500)=3295
26.m	16	465	1+1 (2922+500)=3422
26.n	16	485	1+1 (3047+500)=3547
26.o	16	505	1+1 (3173+500)=3673
26.p	16	525	1+1 (3300+500)=3800
26.q	16	545	1+1 (3425+600)=4025
26.r	16	565	1+1 (3550+600)=4150

MARK	SIZE Ø	RADIUS	LENGHT
27.a	16	585	1+1 (3675+600)=4275
27.b	16	605	1+1 (3800+600)=4400
27.c	16	625	1+1 (3927+700)=4627
27.d	16	645	1+1 (4052+700)=4852
27.e	16	665	1+1 (4178+700)=4878

MARK	SIZE Ø	RADIUS	LENGHT
28.a	16	685	1+1 (4305+700)=5005
28.b	16	705	1+1 (4430+700)=5130
28.c	16	725	1+1 (4555+800)=5355
28.d	16	745	1+1 (4680+800)=5480
28.e	16	765	1+1 (4805+800)=5605
28.f	16	785	1+1 (4932+800)=5732
28.g	16	805	1+1 (5058+800)=5858
28.h	16	825	1+1 (5185+900)=6085
28.i	16	845	1+1 (5310+900)=6210
28.j	16	865	1+1 (5435+900)=6335
28.m	16	885	1+1 (5560+900)=6460
28.n	16	905	1+1 (5685+900)=6585
28.o	16	925	1+1 (5812+1000)=6812
28.p	16	945	1+1 (5938+1000)=6938
28.q	16	965	1+1 (6063+1000)=7063
28.r	16	985	1+1 (6190+1000)=7190
28.s	16	1005	1+1 (6315+1100)=7415
28.t	16	1025	1+1 (6440+1100)=7540
28.u	16	1045	1+1 (6565+1100)=7665
28.v	16	1065	1+1 (6692+1100)=7792
28.z	16	1085	1+1 (6817+1100)=7917
28.aa	16	1105	1+1 (6943+1200)=8143
28.ab	16	1125	1+1 (7070+1200)=8270
28.ac	16	1145	1+1 (7195+1200)=8395
28.ad	16	1165	1+1 (7320+1200)=8520
28.ae	16	1185	1+1 (7445+1200)=8645
28.af	16	1205	1+1 (7570+1300)=8870
28.ag	16	1225	1+1 (7695+1300)=8995
28.ah	16	1245	1+1 (7822+1300)=9122
28.ai	16	1265	1+1 (7948+1300)=9248
28.aj	16	1285	1+1 (8075+1300)=9375
28.ak	16	1305	1+1 (8200+1400)=9600
28.al	16	1325	1+1 (8325+1400)=9725

MARK	SIZE Ø	RADIUS	LENGHT
29.a	16	1345	1+1 (8450+1400)=9850
29.b	16	1365	1+1 (8575+1400)=9975
29.c	16	1385	1+1 (8702+1400)=10102
29.d	16	1405	1+1 (8828+1500)=10328
29.e	16	1425	1+1 (8954+1500)=10454
29.f	16	1445	1+1 (9080+1500)=10580
29.g	16	1465	1+1 (9205+1500)=10705
29.h	16	1485	1+1 (9330+1500)=10830
29.i	16	1505	1+1 (9455+1600)=11055
29.j	16	1525	1+1 (9582+1600)=11182
29.m	16	1545	1+1 (9708+1600)=11308
29.n	16	1565	1+1 (9833+1600)=11433
29.o	16	1585	1+1 (9960+1600)=11558

MATERIALS

CONCRETE
 - LIGHT CONCRETE FOR LAYING FLOOR
 CONCRETE Rk=20 MPa
 - CONCRETE TYPE 1 (FOUNDATION PILES)
 CONCRETE C28/35 (Rck=35 MPa) - EXPOSURE CLASS XC2
 MAXIMUM W/C = 0.40 - CEMENT MINIMUM CONTENT = 300 kg/m³
 Dmax AGGREGATE = 20 mm
 CONSISTENCE CLASS = S5 - CHLORIDES CONTENT CLASS = CL 0.2
 - CONCRETE TYPE 2 (FOUNDATION AND ELEVATION STRUCTURES)
 CONCRETE C35/45 (Rck=45 MPa) - EXPOSURE CLASS XC3
 MAXIMUM W/C = 0.45 - CEMENT MINIMUM CONTENT = 360 kg/m³
 Dmax AGGREGATE = 20 mm
 CONSISTENCE CLASS = S4 - CHLORIDES CONTENT CLASS = CL 0.2
 - NET CONCRETE COVER FOR FOUNDATION AND ELEVATION STRUCTURES 4 cm

REINFORCED CONCRETE STEEL
 - EVERY STRUCTURE
 STEEL B450C

CARPENTRY STEEL
 - BEAMS AND PLATES
 TYPE S275
 BULLION CLASS 8.8
 WELDINGS II CLASS

NOTES

- ALL DIMENSIONS ARE IN cm EXCEPT OTHERWISE TECHNICAL SPECIFICATION
- ELEVATION QUOTATIONS ARE IN m EXCEPT OTHERWISE TECHNICAL SPECIFICATION
- THE POSITIONS OF ARRAYS AND FIXED WIRE MUST BE CHECKED ON SITE BEFORE ASSEMBLY OF DIFFERENT MEMBRATURE
- IN CORRESPONDENCE OF WELLS, CHANNELS, PIPES, ETC. NOT HIGHLIGHTED WITH SECTIONS, WITH THE POSITION OF IRONS AND THEIR SIZE WILL VARY ACCORDINGLY
- FOR PLACEMENT OF REINFORCEMENT IS REQUIRED THE USE OF PLASTIC SPACERS AND TIMELY VERIFICATION OF THE CORRECT BARS COVERING

0	APRIL2011	FIRST ISSUE					
REV.	DATA	DATE	DESCRIZIONE	DESEGN.	CONTR.	Check	APPROV. APPROV.
			CLIENTE OKPAI		2010.101- CIV-012.2 SCALE: 1:50 SHEET: 2/23 FORMATO: A0		
			TITOLO CLARIFLOCCULATOR FOUNDATIONS-CARPENTRY AND CONCRETE REINFORCEMENT PLAN		INGEGNERIA FOUNDATIONS-CARPENTRY AND CONCRETE REINFORCEMENT PLAN WELLS WATER TREATMENT PLANT		
Engineering & Contracting Tunis (Tunisia)			FILE NAME: ED47_RS_002.dwg				